

Triplex Mud Pumps



SDF-500 Triplex Mud Pumps (API-7K)

Specifications

Rated Horsepower: 500 HP
 Rated Pump Speed: 165 SPM
 Maximum Liner Size by Stroke Length: 6-3/4" x 7-1/2"
 Suction Connection: 8"
 Discharge Connection: 4" 5,000 psi Flange
 Gear Ratio: 4.286:1
 Valve Pot: API #5
 Approximate Weight: 21,539 lbs



Performance

Liner Size, inches	6-3/4	6-1/2	6	5-1/2	5	4	
Rated Pressure, psi	1,342	1,447	1,699	2,020	2,442	3,820	
Pump Speed SPM	Input Power HP		Displacement, GPM				
165	500	575	533	454	382	316	202
150	455	523	485	413	347	287	184
140	424	488	452	386	324	268	171
130	394	453	420	358	301	249	159
120	364	418	388	330	278	229	147
110	334	383	356	303	255	210	135
Volume/Stroke, gallons	3.49	3.23	2.75	2.31	1.91	1.22	

Ratings are based on 90% mechanical efficiency and 100% volumetric efficiency.

SDF-800 Triplex Mud Pumps (API-7K)

Specifications

Rated Horsepower: 800 HP
 Rated Pump Speed: 150 SPM
 Maximum Liner Size
 by Stroke Length: 6-3/4" x 9"
 Suction Connection: 10"
 Discharge Connection: 5-1/8" 5,000 psi Flange
 Gear Ratio: 4.207:1
 Valve Pot: API #6
 Approximate Weight: 31,967 lbs



Performance

Liner Size, inches	6-3/4	6-1/2	6	5-1/2	5	4	
Rated Pressure, psi	1,969	2,122	2,490	2,962	3,588	5,000	
Pump Speed SPM	Input Power HP		Displacement, GPM				
150	800	627	582	496	417	344	220
140	747	586	543	463	389	321	206
130	694	544	504	430	361	298	191
120	640	502	465	397	333	275	176
110	587	460	427	364	305	252	162
100	533	418	388	330	278	229	147
Volume/Stroke, gallons	4.18	3.88	3.30	2.78	2.29	1.47	

Ratings are based on 90% mechanical efficiency and 100% volumetric efficiency.

SDF-1000 Triplex Mud Pumps (API-7K)

Specifications

Rated Horsepower: 1,000 HP
 Rated Pump Speed: 140 SPM
 Maximum Liner Size by Stroke Length: 6-3/4" x 10"
 Suction Connection: 12"
 Discharge Connection: 5-1/8" 5,000 psi Flange
 Gear Ratio: 4.207:1
 Valve Pot: API #6
 Approximate Weight: 41,425 lbs



Performance

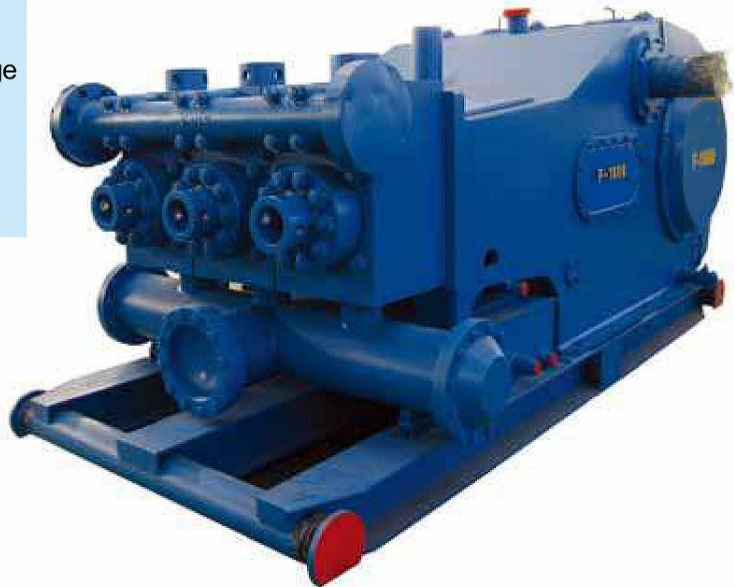
Liner Size, inches		6-3/4	6-1/2	6	5-1/2	5	4
Rated Pressure, psi		2,370	2,558	3,000	3,572	4,322	5,000
Pump Speed SPM	Input Power HP	Displacement, GPM					
140	1,000	651	603	514	432	357	289
130	928	604	560	477	401	331	269
120	857	558	517	441	370	306	248
110	785	511	474	404	339	280	227
100	714	465	431	367	309	255	207
90	642	418	388	330	278	229	186
Volume/Stroke, gallons		4.65	4.31	3.67	3.09	2.55	2.07

Ratings are based on 90% mechanical efficiency and 100% volumetric efficiency.

SDF-1300 Triplex Mud Pumps (API-7K)

Specifications

Rated Horsepower: 1,300 HP
 Rated Pump Speed: 120 SPM
 Maximum Liner Size by Stroke Length: 7" x 12"
 Suction Connection: 12"
 Discharge Connection: 5-1/8" 5,000 psi Flange
 Gear Ratio: 4.206:1
 Valve Pot: API #7
 Approximate Weight: 54,171 lbs



Performance

Liner Size, inches	7	6-3/4	6-1/2	6	5-1/2	5	
Rated Pressure, psi	2,786	2,998	3,232	3,792	4,516	5,000	
Pump Speed SPM	Input Power HP		Displacement, GPM				
120	1,300	720	669	621	529	444	367
110	1,192	660	613	569	485	407	337
100	1,083	600	558	517	441	370	306
90	975	540	502	465	397	333	275
80	867	480	446	414	353	296	245
70	758	420	390	362	308	259	214
Volume/Stroke, gallons	6.00	5.58	5.17	4.41	3.70	3.06	

Ratings are based on 90% mechanical efficiency and 100% volumetric efficiency.

SDF-1600 Triplex Mud Pumps (API-7K)

Specifications

Rated Horsepower: 1,600 HP
 Rated Pump Speed: 120 SPM
 Maximum Liner Size by Stroke Length: 7" x 12"
 Suction Connection: 12"
 Discharge Connection: 5-1/8" 5,000 psi Flange
 Gear Ratio: 4.206:1
 Valve Pot: API #7
 Approximate Weight: 54,655 lbs



Performance

Liner Size, inches	7	6-3/4	6-1/2	6	5-1/2	5	
Rated Pressure, psi	3,430	3,690	3,978	4,668	5,000	5,000	
Pump Speed SPM	Input Power HP		Displacement, GPM				
120	1,600	720	669	621	529	444	367
110	1,467	660	613	569	485	407	337
100	1,334	600	558	517	441	370	306
90	1,200	540	502	465	397	333	275
80	1,067	480	446	414	353	296	245
70	933	420	390	362	308	259	214
Volume/Stroke, gallons	6.00	5.58	5.17	4.41	3.70	3.06	

Ratings are based on 90% mechanical efficiency and 100% volumetric efficiency.

SDF-2200 Triplex Mud Pumps (API-7K)

Specifications

Rated Horsepower: 2,200 HP
 Rated Pump Speed: 105 SPM
 Maximum Liner Size by Stroke Length: 9" x 14"
 Suction Connection: 12"
 Discharge Connection: 5-1/8" 5,000 psi Flange
 Gear Ratio: 3.512:1
 Valve Pot: API #8
 Approximate Weight: 64,815 lbs



Performance

Liner Size, inches	9	8-1/4	7-1/2	7	6	5-1/2	
Rated Pressure, psi	2,760	3,310	4,040	4,505	5,000	5,000	
Pump Speed SPM	Input Power HP	Displacement, GPM					
105	2,200	1,231	1,026	840	754	524	456
90	1,886	1,055	880	720	646	449	391
80	1,676	938	782	640	574	399	347
70	1,467	820	684	560	503	349	304
60	1,257	703	586	480	431	299	261
50	1,048	586	489	400	359	249	217
Volume/Stroke, gallons	11.72	9.77	8.00	7.18	4.99	4.34	

Ratings are based on 90% mechanical efficiency and 100% volumetric efficiency.

SDP-1000 Triplex Mud Pumps (API-7K)

Specifications

Rated Horsepower: 1,000 HP
 Rated Pump Speed: 130 SPM
 Stroke Length: 9"
 Maximum Liner Size: 7"
 Piston Load : 101,550 lbs
 Gear Ratio: 4.48:1
 Approximate Weight: 24,800 lbs



Performance

Liner Size, inches	Displacement		Maximum Pressure, psi	Pump RPM	JackShaft RPM
	Gallon Per Revolution	Gallon Per Minute			
7	4.5	585	2,639	130	582
6-1/2	3.88	504	3,060		
6-1/4	3.59	466	3,310		
6	3.30	430	3,592		
5-1/2	2.78	361	4,274		
5	2.29	298	5,000		
4-1/2	1.86	242	5,000		
4	1.47	191	5,000		

Ratings are based on 90% mechanical efficiency and 100% volumetric efficiency.

SDP-550 Triplex Mud Pumps (API-7K)

Specifications

- Rated Horsepower: 550 HP
- Rated Pump Speed: 145 SPM
- Stroke Length: 7"
- Maximum Liner Size: 7"
- Piston Load : 64,400 lbs
- Gear Ratio: 4.625:1
- Approximate Weight: 16,780 lbs



Performance

Liner Size, inches	Displacement		Maximum Pressure, psi	Pump RPM	JackShaft RPM
	Gallon Per Revolution	Gallon Per Minute			
7	3.5	507	1,673	145	670
6-1/2	3.02	437	1,940		
6-1/4	2.78	404	2,100		
6	2.57	373	2,277		
5-1/2	2.16	313	2,710		
5	1.78	259	3,279		
4-1/2	1.45	210	4,048		
4	1.14	166	5,000		

Ratings are based on 90% mechanical efficiency and 100% volumetric efficiency.

SDP-275 Triplex Mud Pumps (API-7K)

Specifications

Rated Horsepower: 275 HP
 Rated Pump Speed: 175 SPM
 Stroke Length: 8"
 Maximum Liner Size: 5"
 Piston Load : 22,030 lbs
 Gear Ratio: 4.7:1
 Approximate Weight: 9,800 lbs



Performance

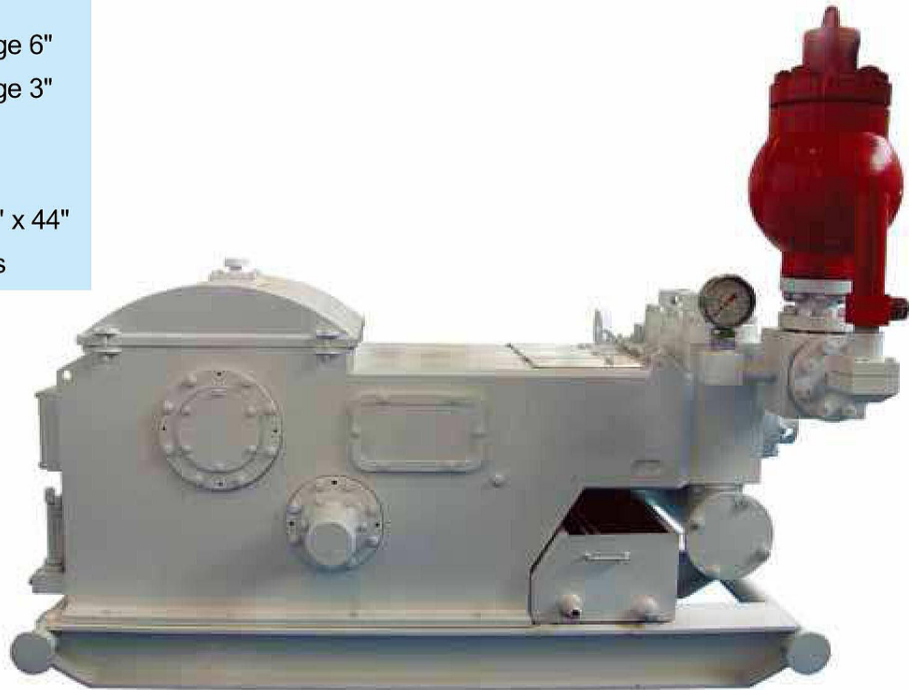
Liner Size, inches	Displacement		Maximum Pressure, psi	Pump RPM	JackShaft RPM
	Gallon Per Revolution	Gallon Per Minute			
5	2.04	357	1,122	175	823
4-1/2	1.65	289	1,386		
4	1.31	228	1,753		
3-1/2	1.00	175	2,290		
3-1/4	0.862	151	2,657		
3	0.734	128	3,118		

Ratings are based on 90% mechanical efficiency and 100% volumetric efficiency.

SD-EW-446 Triplex Mud Pumps (API-7K)

Specifications

Rated Horsepower: 440 HP
 Rated Pump Speed: 320 SPM
 Stroke Length: 6"
 Suction Inlet: 150 flange 6"
 Discharge Outlet: 900 flange 3"
 Gear Ratio: 4.578:1
 Valve Pot: API #4
 Dimensions: 98" x 48" x 44"
 Approximate Weight: 9,840 lbs



SD-EW-446 Performance

Liner Size, inches	6	5-1/2	5	4-1/2	4	3-1/2	
Rated Pressure, psi	1,027	1,222	1,479	1,710	2,169	2,816	
Pump Speed SPM	Input Power HP	Displacement, GPM					
320	440	661	555	459	397	313	240
270	380	551	463	382	335	264	202
220	320	441	370	306	273	215	165
170	260	330	278	229	211	167	127
120	200	220	185	153	149	118	90
70	200	110	93	76	87	69	52
Volume/Stroke, gallons	2.203	1.851	1.530	1.239	0.979	0.750	

Ratings are based on 90% mechanical efficiency and 100% volumetric efficiency.

Triplex Mud Pump Parts

We supply triplex mud pump parts for F-500, F-800, F-1000, FB-1300, FB-1600, T500, T800, T1000, T1300, T1600, JWS165, JWS340, JWS400, 7-P-50, 8-P-80, 9-P-100, 10-P-130, 12-P-160, A-350-PT, A-560-PT, A-600-PT, A-850-PT, A-1100-PT, A-1400-PT, A-1700-PT, etc.



Hy-chrome Liners



Ceramic Liners



Liners



Module



Pistons

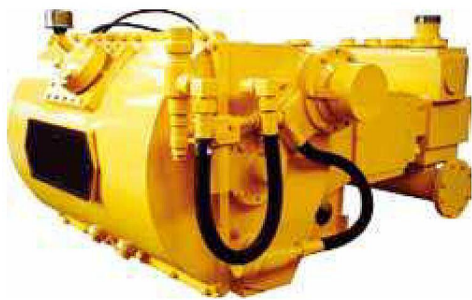


Valve and Seat

Well Service Pumps



TPP-350 Triplex Plunger Pumps



Specifications

Max. Brake Horsepower: 350 BHP
 Max. Rod Load Capacity: 112,000 lbs
 Stroke Length: 5 inches
 Gear Ratio: 4.32:1
 Dimensions: 70" x 47" x 32"
 Weight: 4,520 lbs

Performance

Plunger Diameter	Displacement at Pump Strokes Per Minute									
	50		100		200		300		350	
inches	gpm	psi	gpm	psi	gpm	psi	gpm	psi	gpm	psi
3-3/4	36	10,150	72	7,658	143	3,829	215	2,553	251	2,190
4	41	8,700	82	6,715	163	3,365	245	2,234	286	1,915
4-1/2	52	7,250	103	5,308	207	2,654	310	1,769	366	1,523
5	64	5,500	128	4,293	255	2,147	383	1,436	446	1,233

Ratings are based on 90% mechanical efficiency and 100% volumetric efficiency.

TPP-600S Triplex Plunger Pumps



Specifications

Max. Brake Horsepower: 600 BHP
 Max. Rod Load Capacity: 100,000 lbs
 Stroke Length: 6 inches
 Gear Ratio: 4.6:1
 Dimensions: 51" x 53" x 24"
 Weight: 4,940 lbs

Performance

Plunger Diameter	Displacement Per Rev	Displacement at Pump Strokes Per Minute / Pinion RPM									
		50/230		120/552		200/920		300/1380		450/2070	
in	gal/rev	gpm	psi	gpm	psi	gpm	psi	gpm	psi	gpm	psi
2-1/2	0.38	19	20,372	46	20,165	76	12,099	115	8,066	172	5,377
2-3/4	0.46	23	16,836	56	16,665	93	9,999	139	6,666	208	4,444
3	0.55	28	14,147	66	14,003	110	8,402	165	5,601	248	3,734
3-1/2	0.75	37	10,394	90	10,288	150	6,173	225	4,115	337	2,744
4	0.98	49	7,958	118	7,877	196	4,726	294	3,151	441	2,100
4-1/2	1.24	62	6,288	149	6,224	248	3,734	372	2,489	558	1,660
Input Power: BHP		253		600		600		600		600	

Ratings are based on 90% mechanical efficiency and 100% volumetric efficiency.

TPP-900 Triplex Plunger Pumps



Specifications

Max. Brake Horsepower: 900 BHP
 Max. Rod Load Capacity: 119,600 lbs
 Stroke Length: 8 inches
 Gear Ratio: 5.62:1
 Dimensions: 80" x 56" x 40"
 Weight: 9,000 lbs

Performance

Plunger Diameter	Displacement at Pump Strokes Per Minute									
	100		150		200		250		300	
inches	gpm	psi	gpm	psi	gpm	psi	gpm	psi	gpm	psi
3-3/4	115	10,500	172	8,050	230	6,034	287	4,830	344	4,032
4	131	9,420	196	7,078	261	5,308	327	4,250	392	3,540
4-1/2	165	7,500	248	5,598	330	4,192	413	3,350	496	2,799
5	204	6,000	306	4,525	408	3,394	510	2,712	612	2,263

Ratings are based on 90% mechanical efficiency and 100% volumetric efficiency.

TPP-1000 Triplex Plunger Pumps



Specifications

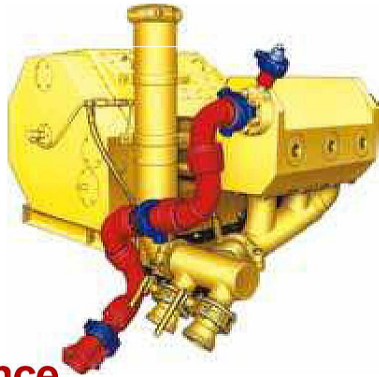
Max. Brake Horsepower: 1,000 BHP
 Max. Rod Load Capacity: 133,000 lbs
 Stroke Length: 8 inches
 Gear Ratio: 5.04:1
 Dimensions: 80" x 56" x 40"
 Weight: 8,500 lbs

Performance

Plunger Diameter	Displacement at Pump Strokes Per Minute									
	90		150		200		250		300	
inches	gpm	psi	gpm	psi	gpm	psi	gpm	psi	gpm	psi
3-3/4	103	11,600	172	9,007	230	6,759	287	5,410	344	4,511
4	118	10,153	196	7,934	261	5,366	327	4,757	392	3,960
4-1/2	149	7,977	248	6,266	330	4,699	413	3,756	496	3,133
5	184	6,527	306	5,076	408	3,800	510	3,046	612	2,538

Ratings are based on 90% mechanical efficiency and 100% volumetric efficiency.

TPP-1800 Triplex Plunger Pumps



Specifications

Max. Brake Horsepower: 1,800 BHP
 Max. Rod Load Capacity: 229,000 lbs
 Stroke Length: 8 inches
 Gear Ratio: 6.35:1
 Dimensions: 95" x 66" x 45"
 Weight: 12,280 lbs

Performance

Plunger Diameter	Displacement at Pump Strokes Per Minute									
	75		100		200		300		330	
inches	gpm	psi	gpm	psi	gpm	psi	gpm	psi	gpm	psi
4	98	15,000	131	15,000	261	10,680	392	7,120	431	6,475
4-1/2	124	14,155	165	14,155	330	8,415	496	5,610	545	5,095
5	153	11,465	204	11,465	408	6,805	612	4,540	673	4,125

Ratings are based on 90% mechanical efficiency and 100% volumetric efficiency.

TPP-2000 Triplex Plunger Pumps



Specifications

Max. Brake Horsepower: 2,000 BHP
 Max. Rod Load Capacity: 229,300 lbs
 Stroke Length: 8 inches
 Gear Ratio: 6.35:1
 Dimensions: 90" x 60" x 45"
 Weight: 12,360 lbs

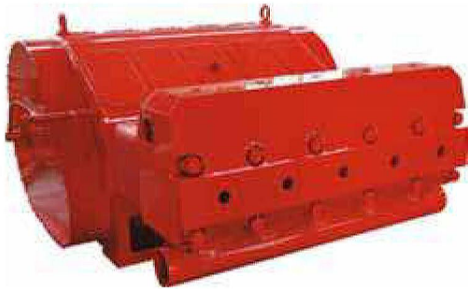
Performance

Plunger Diameter	Displacement at Pump Strokes Per Minute									
	75		115		200		300		330	
inches	gpm	psi	gpm	psi	gpm	psi	gpm	psi	gpm	psi
4	98	15,000	150	15,000	261	11,815	392	7,877	431	7,161
4-1/2	124	14,147	190	14,147	330	9,336	496	6,224	545	5,658
5	153	11,459	235	11,459	408	7,562	612	5,041	673	4,583

Ratings are based on 90% mechanical efficiency and 100% volumetric efficiency.

QPP-2500 Quintuplex Plunger Pumps

QPP-2500 plunger pumps are rugged well service pumps designed and manufactured to operate in harsh pumping conditions. The rated braking horsepower is 2,500 HP with 8" stroke length. The plunger sizes are available from 3-3/4" to 6". These pumps are designed for acidizing and fracturing applications.



Specifications

Max. Brake Horsepower:	2,500 BHP
Max. Rod Load Capacity:	192,325 lbs
Stroke Length:	8 inches
Gear Ratio:	6.353:1
Dimensions:	86.57" x 77.95" x 43.82"
Weight:	14,903 lbs

Performance

Plunger Diameter	Displacement Per Rev	Displacement at Pump Strokes Per Minute / Pinion RPM									
		111/705		150/953		200/1271		250/1588		330/2100	
in	gal/rev	gpm	psi	gpm	psi	gpm	psi	gpm	psi	gpm	psi
6	4.89	543	6,805	734	5,254	978	3,943	1,223	3,153	1,619	2,382
5-3/4	4.49	498	7,410	674	5,722	898	4,295	1,123	3,434	1,482	2,602
5-1/2	4.11	456	8,100	617	6,250	822	4,692	1,028	3,751	1,356	2,844
5	3.40	377	9,800	510	7,562	680	5,671	850	4,537	1,122	3,437
4-1/2	2.75	305	12,100	413	9,338	550	7,012	688	5,605	908	4,247
4	2.17	241	15,315	326	11,830	434	8,886	543	7,102	716	5,386
3-3/4	1.91	212	17,420	287	13,437	382	10,096	478	8,068	630	6,121
Input Power: BHP		2,400		2,500		2,500		2,500		2,500	

Ratings are based on 90% mechanical efficiency and 100% volumetric efficiency.

QPP-2500SD Super Duty Quintuplex Plunger Pumps

QPP-2500SD plunger pumps are rugged well service pumps designed and manufactured to operate in harsh pumping conditions. The rated braking horsepower is 2,500 HP with 8" stroke length. The plunger sizes are available from 3-1/2" to 6-1/2". These pumps are designed for acidizing and fracturing applications.



Specifications

Max. Brake Horsepower:	2,500 BHP
Max. Rod Load Capacity:	192,325 lbs
Stroke Length:	8 inches
Gear Ratio:	6.353:1
Dimensions:	90.43" x 87.40" x 45.75"
Weight:	20,342 lbs

Performance

Plunger Diameter	Displacement Per Rev	Displacement at Pump Strokes Per Minute / Pinion RPM									
		111/705		150/953		200/1271		250/1588		330/2100	
in	gal/rev	gpm	psi	gpm	psi	gpm	psi	gpm	psi	gpm	psi
6-1/2	5.74	637	5,800	861	4,479	1,148	3,359	1,435	2,687	1,894	2,036
6	4.89	543	6,805	734	5,254	978	3,943	1,223	3,153	1,619	2,382
5-3/4	4.49	498	7,410	674	5,722	898	4,295	1,123	3,434	1,482	2,602
5-1/2	4.11	456	8,100	617	6,250	822	4,692	1,028	3,751	1,356	2,844
5	3.40	377	9,800	510	7,562	680	5,671	850	4,537	1,122	3,437
4-1/2	2.75	305	12,100	413	9,338	550	7,012	688	5,605	908	4,247
4	2.17	241	15,315	326	11,830	434	8,886	543	7,102	716	5,386
3-3/4	1.91	212	17,420	287	13,437	382	10,096	478	8,068	630	6,121
Input Power: BHP		2,400		2,500		2,500		2,500		2,500	

Ratings are based on 90% mechanical efficiency and 100% volumetric efficiency.

Pumping Units



Conventional Crank Balanced Pumping Units (API-11E)



Unit Size	Polished Rod Capacity, lbs	Stroke Length, inches	Gear Reducer Peak Torque Rating, in.lbs
C-912D-470-240	47,000	240, 211, 181	912,000
C-912D-427-216	42,700	216, 185, 155	912,000
C-912D-427-192	42,700	192, 165, 138	912,000
C-912D-305-192	30,500	192, 165, 138	912,000
C-912D-365-168	36,500	168, 144, 121	912,000
C-912D-305-168	30,500	168, 144, 121	912,000
C-912D-427-144	42,700	144, 123, 102	912,000
C-640D-305-192	30,500	192, 165, 138	640,000
C-640D-305-168	30,500	168, 144, 121	640,000
C-640D-365-144	36,500	144, 123, 102	640,000
C-640D-305-144	30,500	144, 123, 102	640,000
C-640D-256-144	25,600	144, 123, 102	640,000
C-640D-305-120	30,500	120, 102, 84	640,000
C-456D-305-168	30,500	168, 144, 121	456,000
C-456D-305-144	30,500	144, 123, 102	456,000
C-456D-256-144	25,600	144, 123, 102	456,000
C-456D-365-120	36,500	120, 102, 84	456,000
C-456D-305-120	30,500	120, 102, 84	456,000
C-456D-256-120	25,600	120, 102, 84	456,000
C-320D-256-144	25,600	144, 123, 102	320,000
C-320D-256-120	25,600	120, 102, 84	320,000
C-320D-213-120	21,300	120, 102, 84	320,000

Unit Size	Polished Rod Capacity, lbs	Stroke Length, inches	Gear Reducer Peak Torque Rating, in.lbs
C-320D-256-144	25,600	144, 123, 102	320,000
C-320D-256-120	25,600	120, 102, 84	320,000
C-320D-213-120	21,300	120, 102, 84	320,000
C-320D-305-100	30,500	100, 85, 70	320,000
C-320D-256-100	25,600	100, 85, 70	320,000
C-320D-213-86	21,300	86, 71, 56	320,000
C-228D-213-120	21,300	120, 102, 84	228,000
C-228D-173-100	17,300	100, 86, 72	228,000
C-228D-246-86	24,600	86, 71, 56	228,000
C-228D-213-86	21,300	86, 71, 56	228,000
C-228D-200-74	20,000	74, 64, 54	228,000
C-228D-173-74	17,300	74, 64, 54	228,000
C-160D-173-86	17,300	86, 74, 62	160,000
C-160D-200-74	20,000	74, 64, 54	160,000
C-160D-173-74	17,300	74, 64, 54	160,000
C-160D-143-74	14,300	74, 64, 54	160,000
C-160D-173-64	17,300	64, 54, 44	160,000
C-114D-119-86	11,900	86, 72, 59	114,000
C-114D-143-74	14,300	74, 62, 51	114,000
C-114D-173-64	17,300	64, 54, 44	114,000
C-114D-143-64	14,300	64, 52, 40	114,000
C-114D-133-54	13,300	54, 45, 36	114,000
C-80D-119-64	11,900	64, 53, 42	80,000
C-80D-133-54	13,300	54, 45, 36	80,000
C-80D-119-54	11,900	54, 45, 36	80,000
C-80D-133-48	13,300	48, 40, 32	80,000
C-80D-109-48	10,900	48, 37, 25	80,000
C-57D-76-54	7,600	54, 41, 28	57,000
C-57D-109-48	10,900	48, 37, 25	57,000
C-57D-95-48	9,500	48, 37, 25	57,000
C-57D-89-42	8,900	42, 33, 23	57,000
C-57D-76-42	7,600	42, 33, 23	57,000
C-40D-76-48	7,600	48, 37, 27	40,000
C-40D-89-42	8,900	42, 33, 23	40,000
C-40D-76-42	7,600	42, 33, 23	40,000
C-40D-89-36	8,900	36, 28, 20	40,000
C-25D-67-36	6,700	36, 28, 20	25,000
C-25D-56-36	5,600	36, 28, 20	25,000
C-25D-53-30	5,300	30, 20	25,000

Conventional Beam Balanced Pumping Units (API-11E)



Unit Size	Polished Rod Capacity, lbs	Stroke Length, inches	Gear Reducer Peak Torque Rating, in.lbs
B-80D-119-64	11,900	64, 54	80,000
B-80D-76-64	7,600	64, 54	80,000
B-80D-133-54	13,300	51, 41	80,000
B-80D-119-64	11,900	51, 41	80,000
B-80D-76-54	7,600	51, 41	80,000
B-80D-109-48	10,900	48, 35	80,000
B-57D-109-54	10,900	54, 41	57,000
B-57D-89-54	8,900	54, 41	57,000
B-57D-76-54	7,600	54, 41	57,000
B-57D-109-48	10,900	48, 35	57,000
B-57D-89-48	8,900	48, 35	57,000
B-40D-89-48	8,900	48, 35	40,000
B-40D-76-42	7,600	42, 29	40,000
B-25D-67-36	6,700	36, 27	25,000
B-16D-53-30	5,300	30, 23	16,000

API Sucker Rods (API-11B)

Our API sucker rods include size 5/8", 3/4", 7/8", 1", 1-1/8", 1-1/4" and grade C, D, K, and H.

